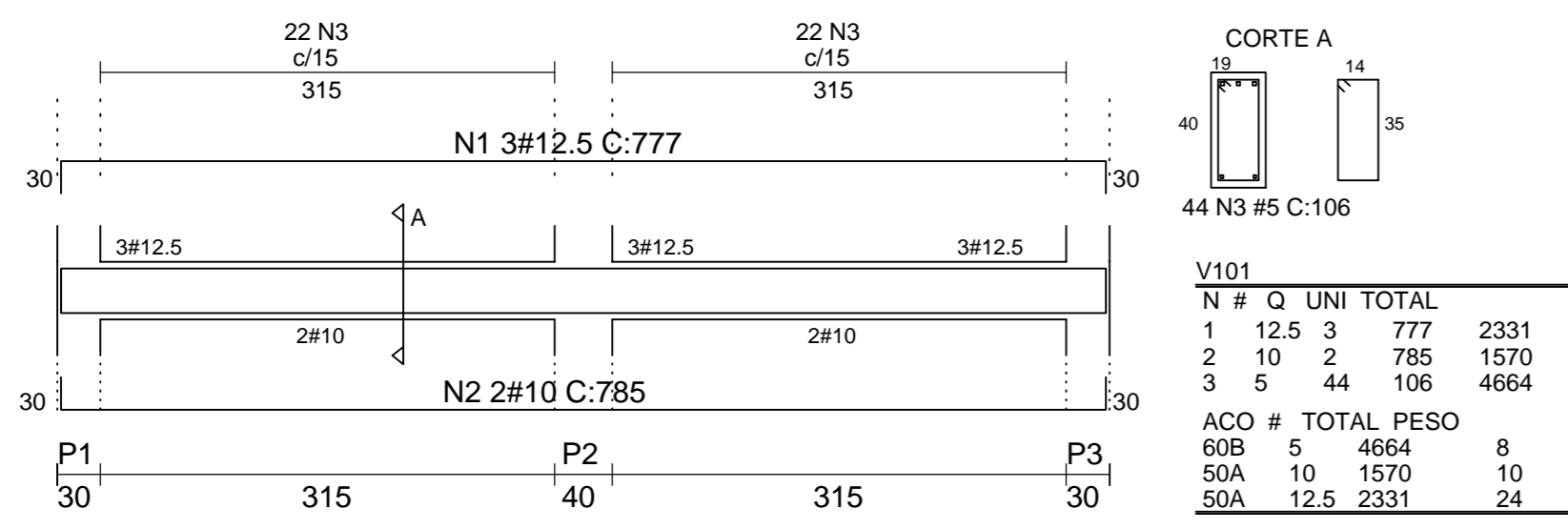
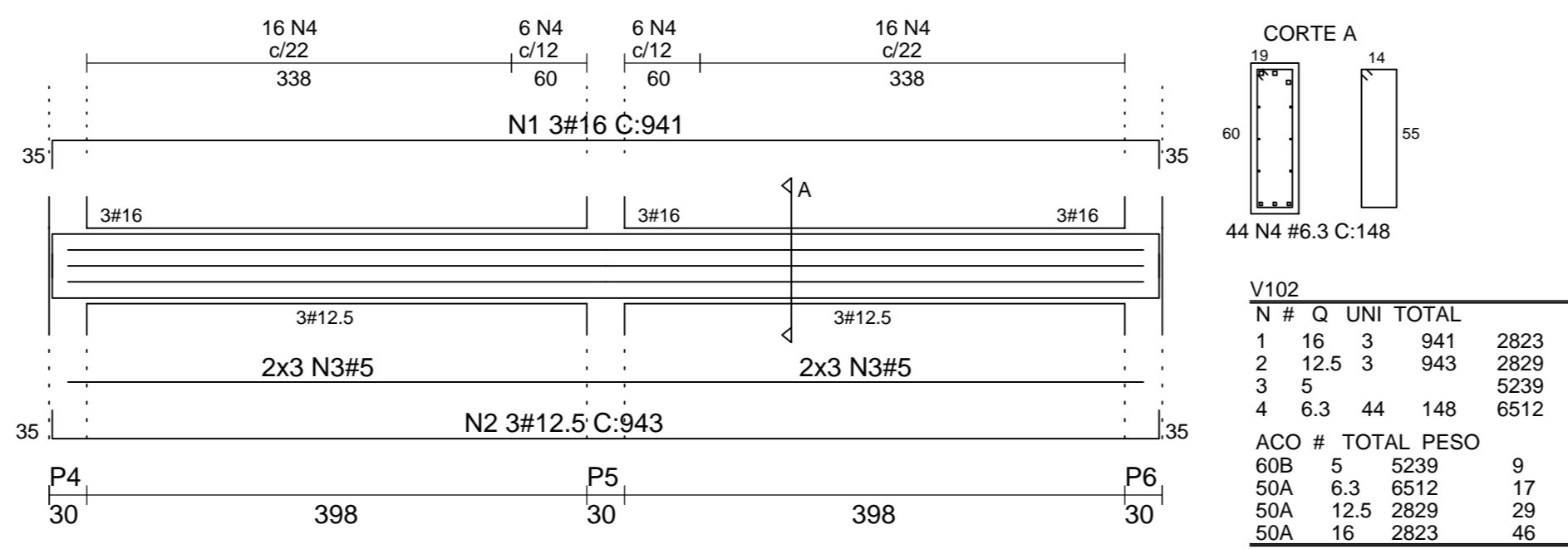


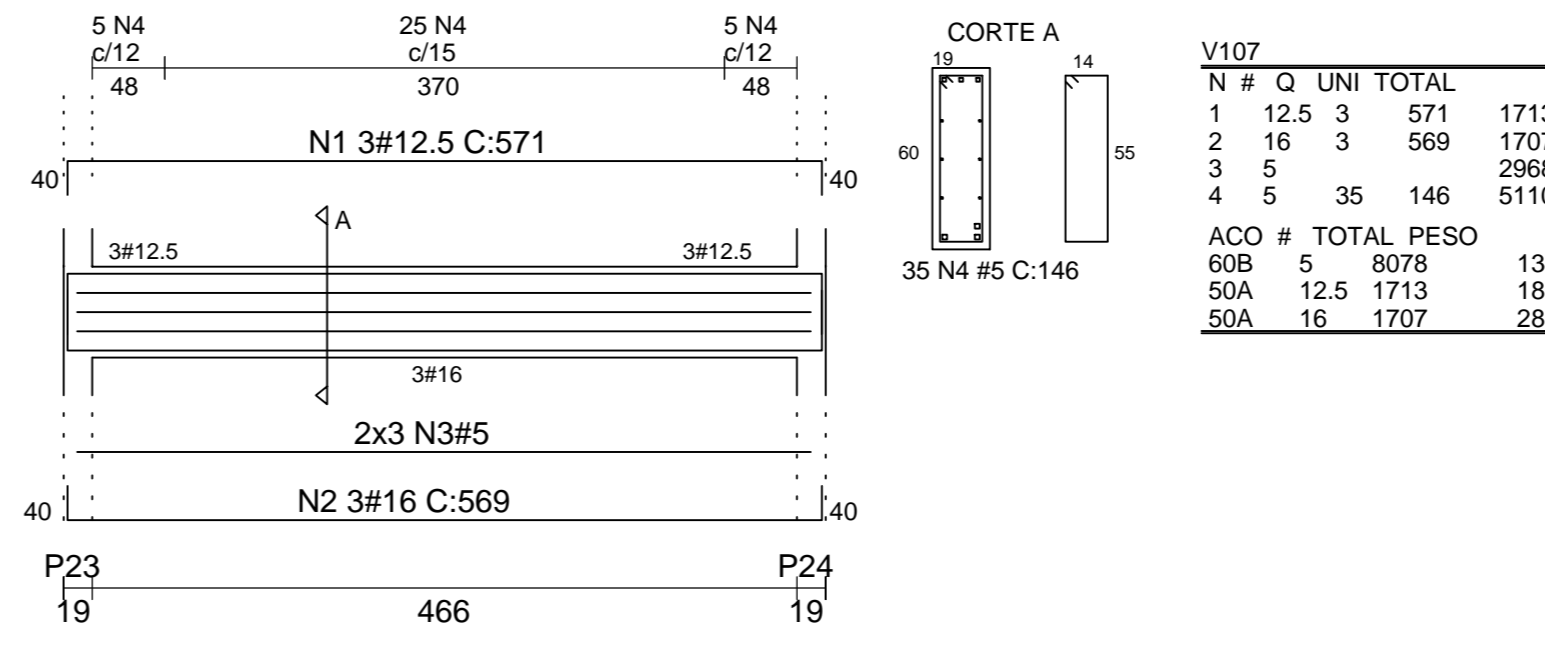
V101 19/40



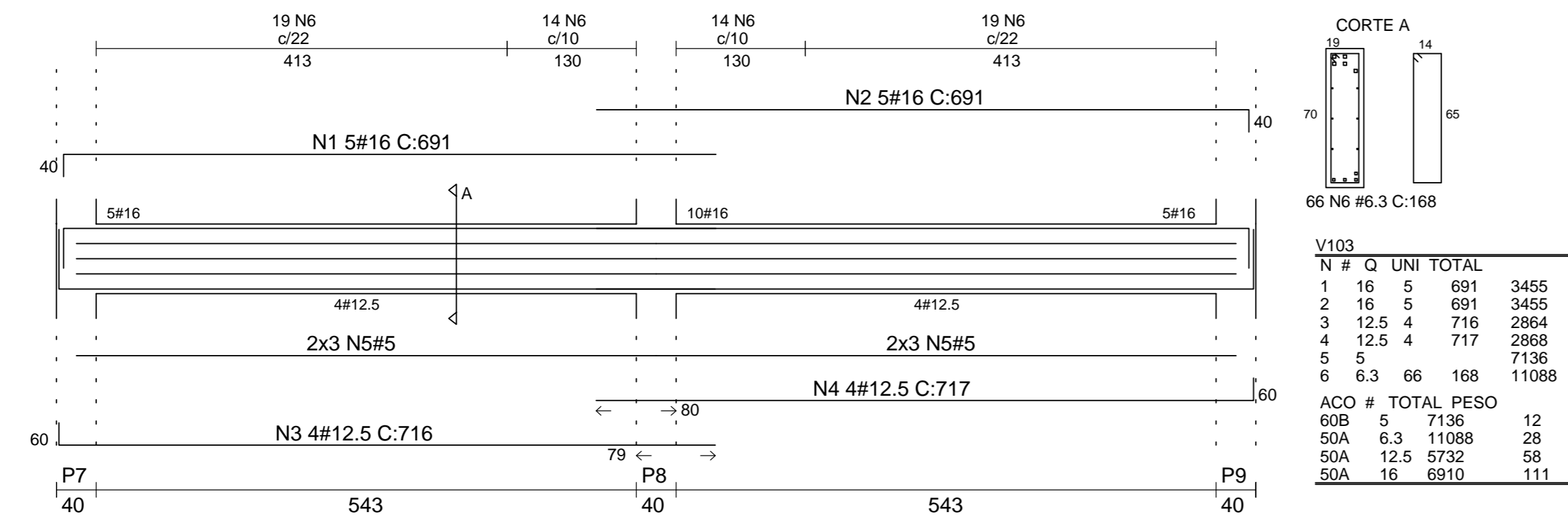
V102 19/60



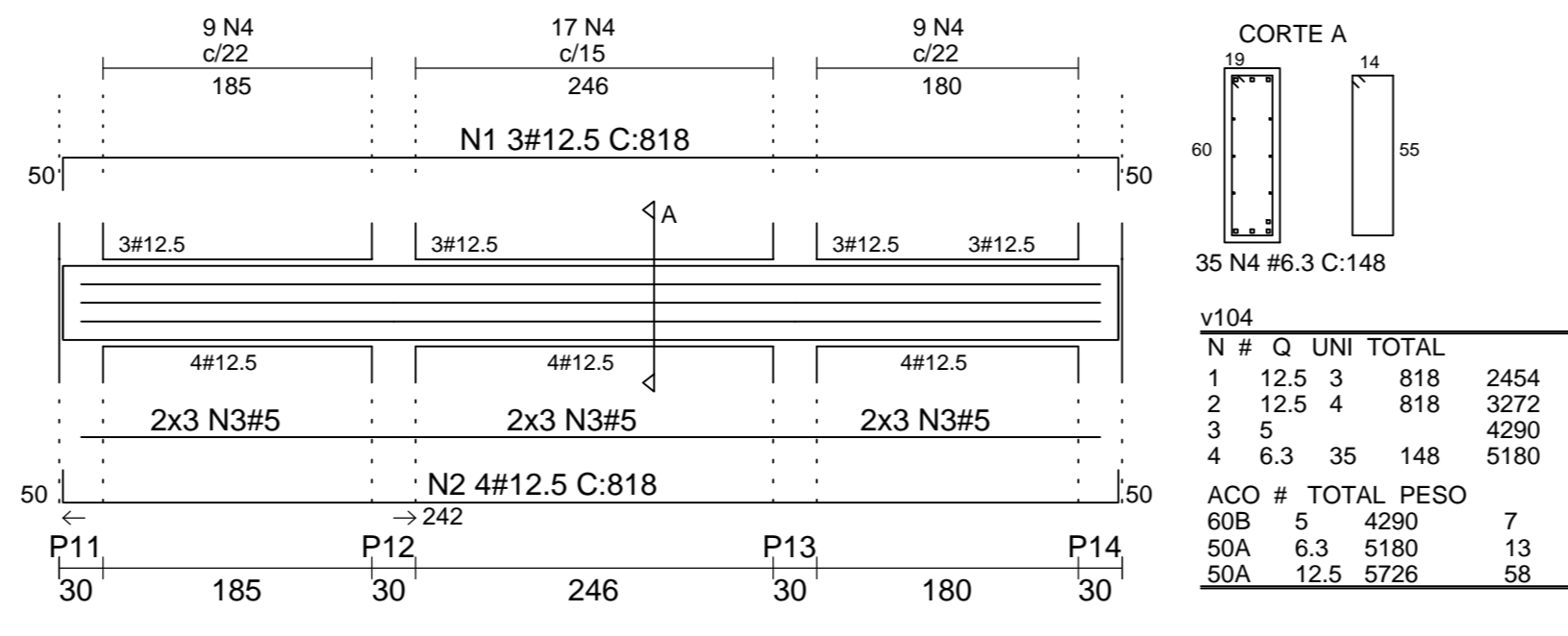
V107 19/60



V103 19/70



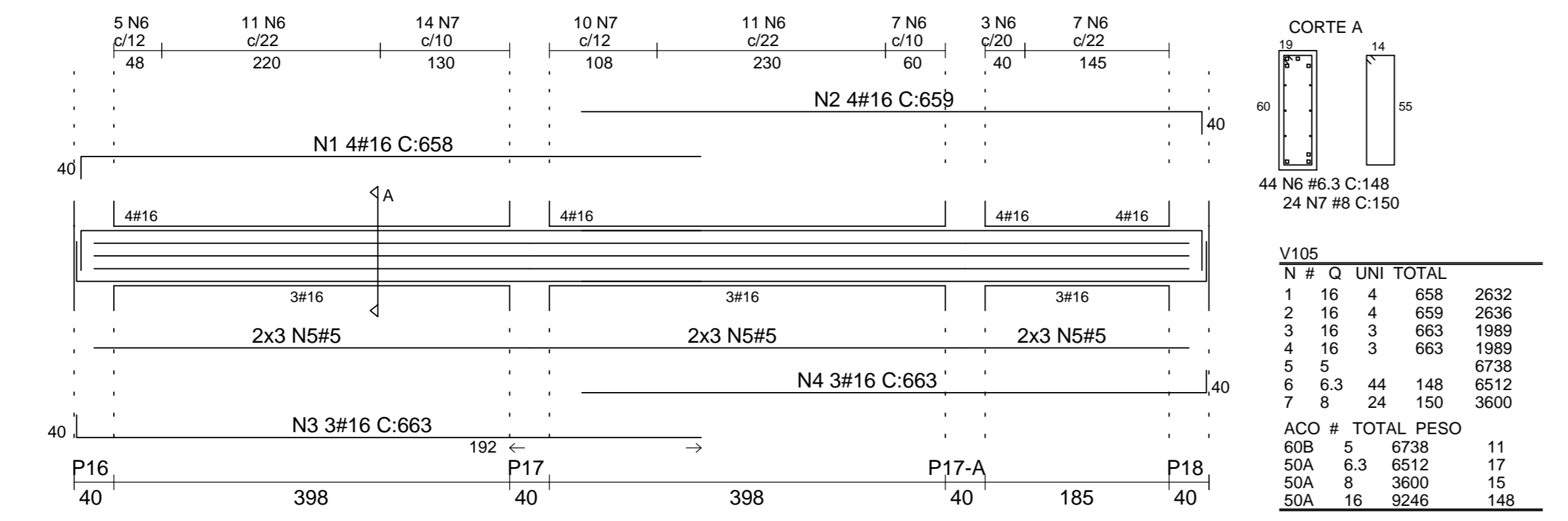
V104 19/60



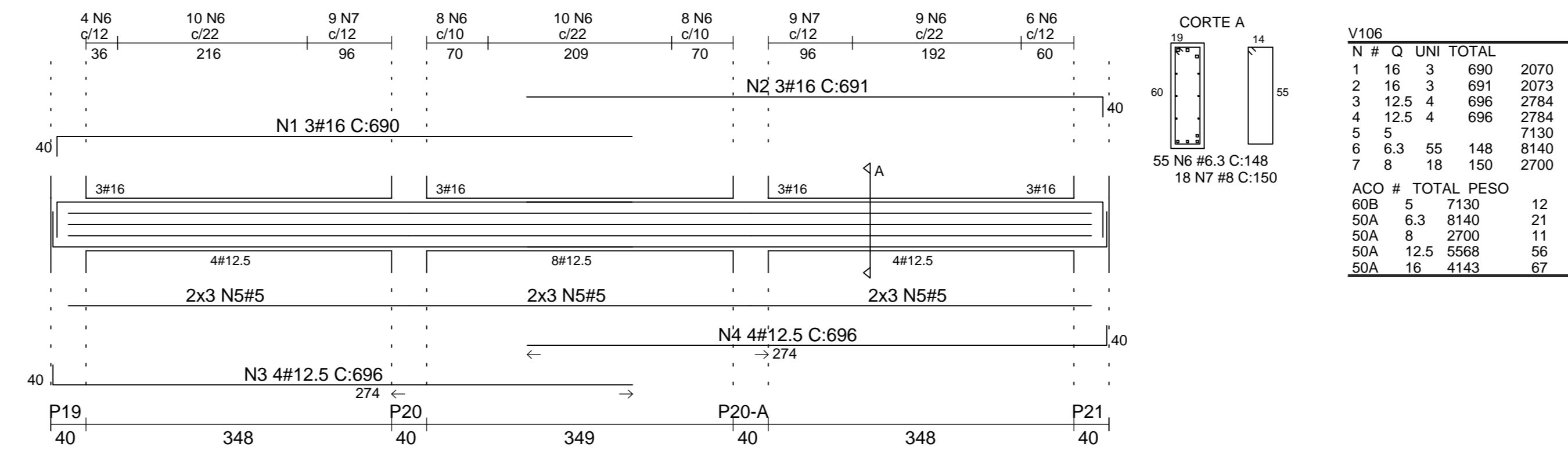
NOTAS :

- NÃO TIRAR MEDIDAS EM ESCALA
- CONFIRMAR MEDIDAS NA OBRA
- CONCRETO 25,0 MPA
- TRANSPASSES MÍNIMOS = 1,20 m
- RELAÇÃO ÁGUA/CIMENTO EM MASSA <0,60

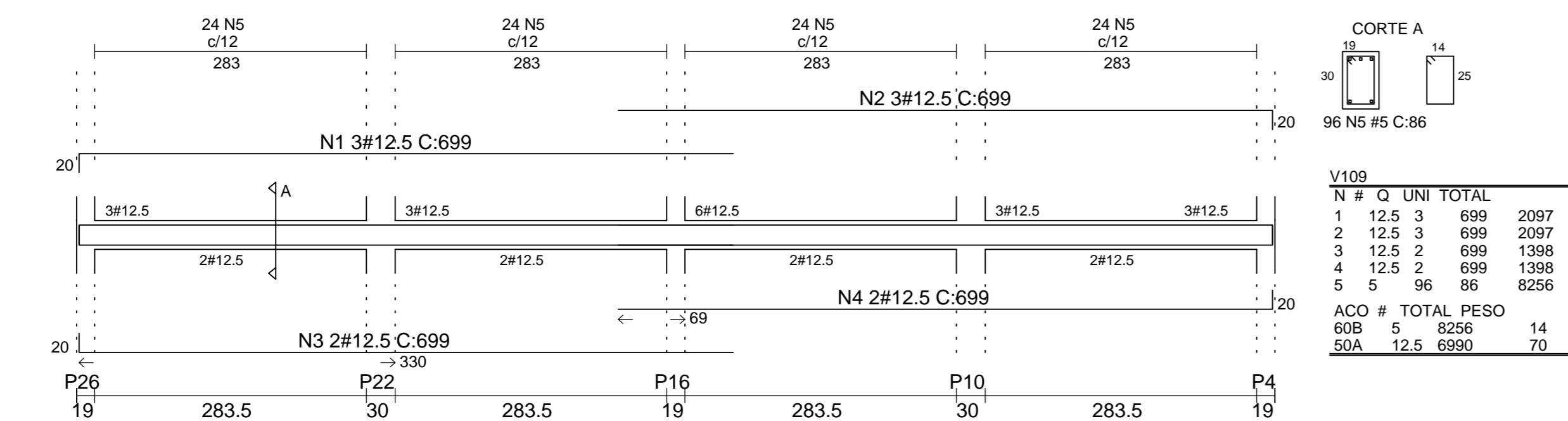
V105 19/60



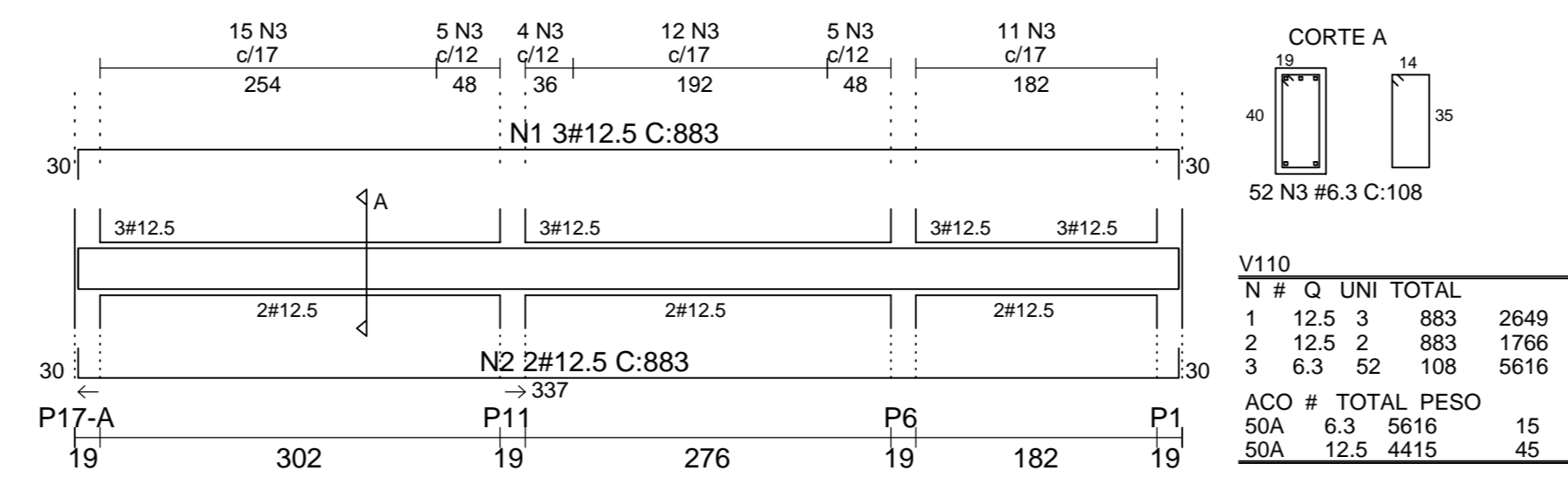
V106 19/60



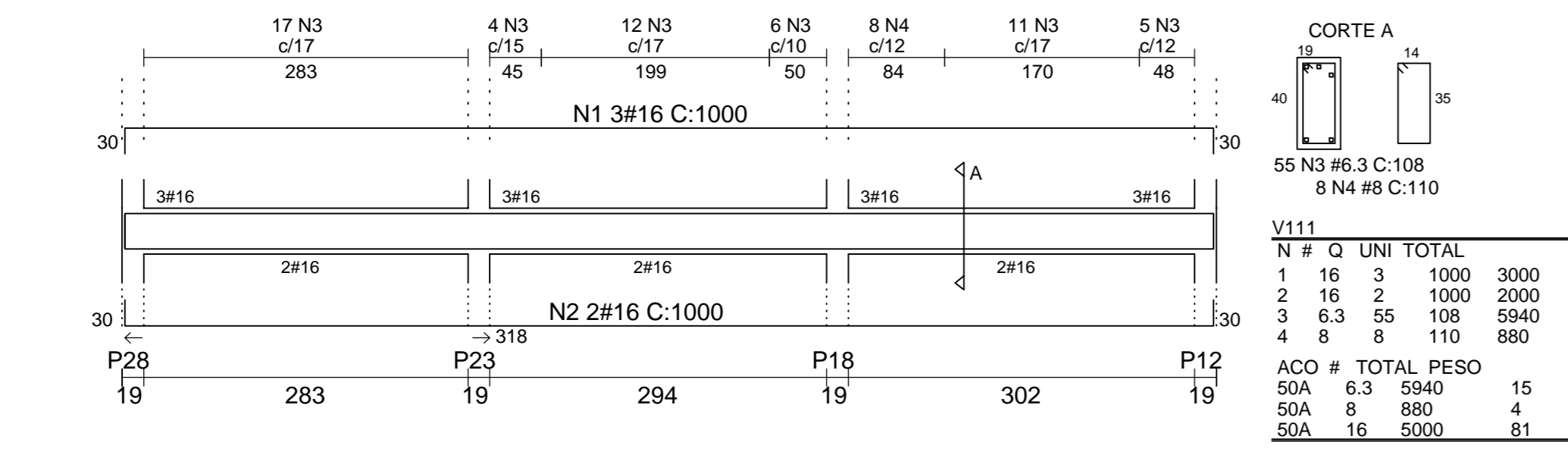
V109 19/30



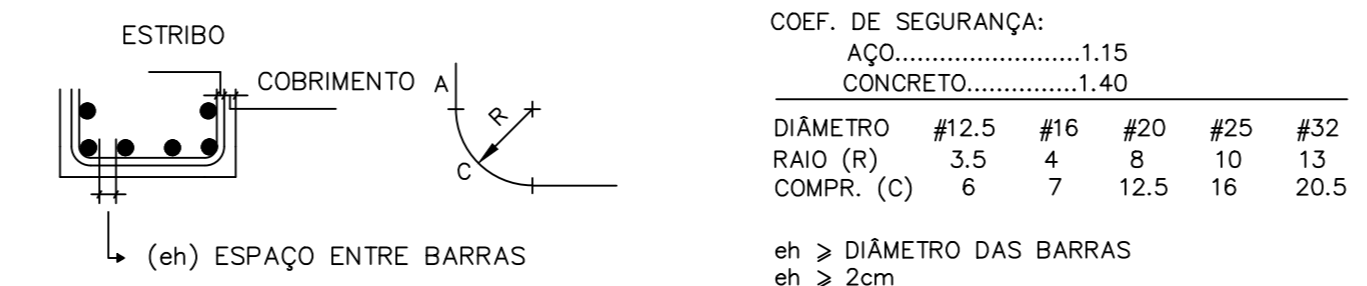
V110 19/40



V111 19/40



DOBRAS E DISTÂNCIAS ENTRE BARRAS



Coordenação Geral

- Eng<sup>o</sup> Civil - Francisco José Barboza de Oliveira Prata. CREA/SP 5061637014
- Eng<sup>o</sup> Civil - Eduardo José Barboza de Oliveira Prata. CREA/SP 5061939774

REVISÃO	DATA	DESCRIÇÃO	POR

**EXATA**  
ENGENHARIA E COMÉRCIO LTDA.

R. Riachuelo, 340 - Centro  
Campinas / SP - CEP:13015-320  
Fone / Fax (19) 3236-1034  
Site: www.exatocampinas.com.br  
e-mail: coratato@exatocampinas.com.br

CONTRATANTE: CEMEI MARCIA MARIA OTRANTO JORGE (FUMEC)

LOCAL: RUA GUERINO BRISTOTTI S/N - JARDIM MIRIAM DA COSTA

OBRA: INSTITUCIONAL TÍTULO: PROJETO ESTRUTURAL FOLHA: C08/12

Nº OBRA: 92221220141297368 TÍTULO: DET. ARMAÇÃO DAS - V100

AUTOR DO PROJETO: Eng. EDUARDO PRATA DATA: 09/2014

DESENHO: EXATA ENGENHARIA ESCALA: 1:50